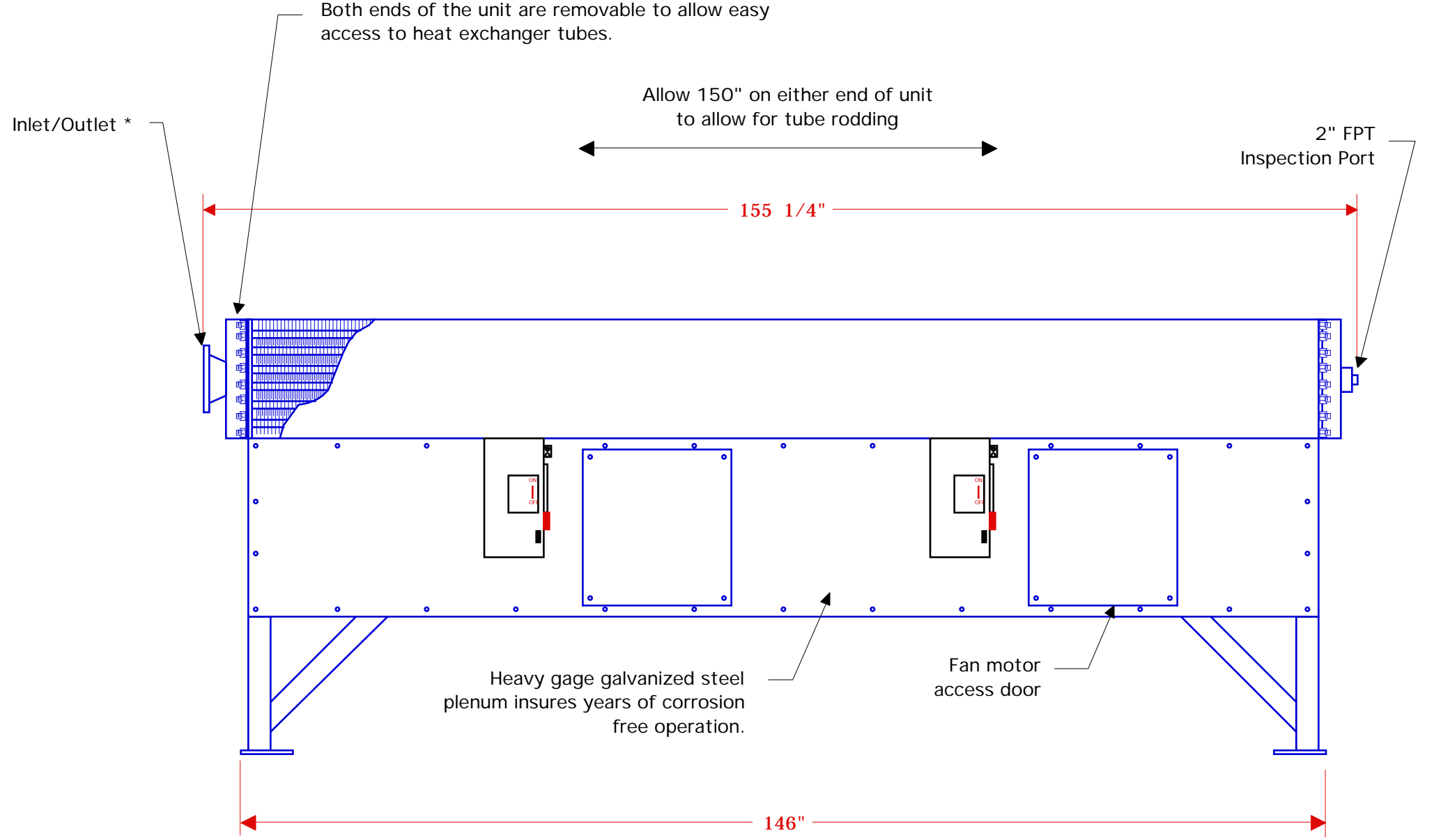
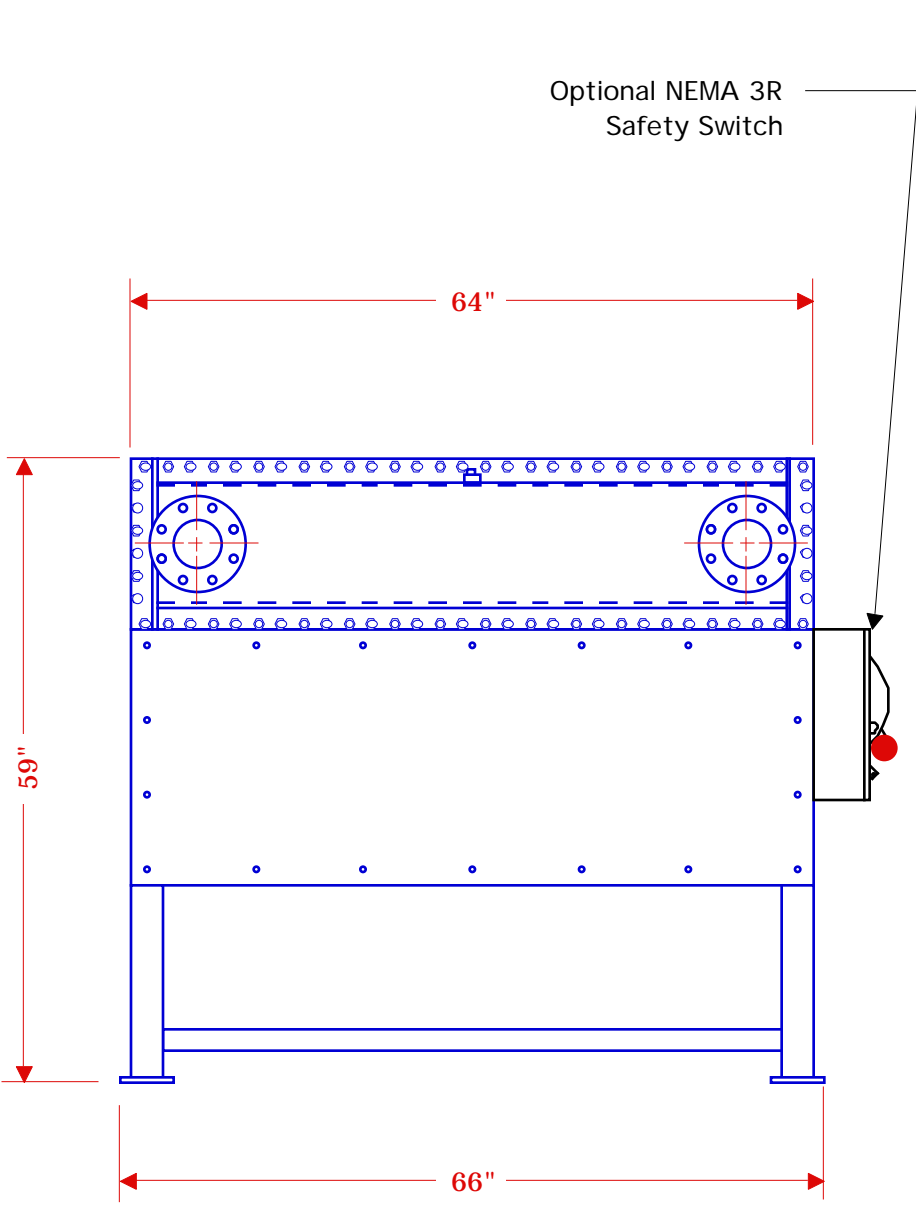



FULL LOAD AMPS	
FAN MOTOR	460 / 3 / 60
5 HP, 1140 RPM	8.8
5 HP, 875 RPM	9.5
3 HP, 860 RPM	6.1

Air Flow
↑



* NOTE: Either Nozzle may be the inlet or outlet
All dimensions are approximate and subject to change without notice.

Weight: 4745 lbs

	SBS CORPORATION 81 MILL STREET • ROCHESTER, MI 48307 • USA U.S. & Canada 1-800-662-8776 • Fax 1-248-652-4303 • www.sbscorporat		
	CUSTOMER:		
DRAWN BY: GSB	DATE: 3/20/04	SCALE: 1 : 18	
Quench Air Model 5126			