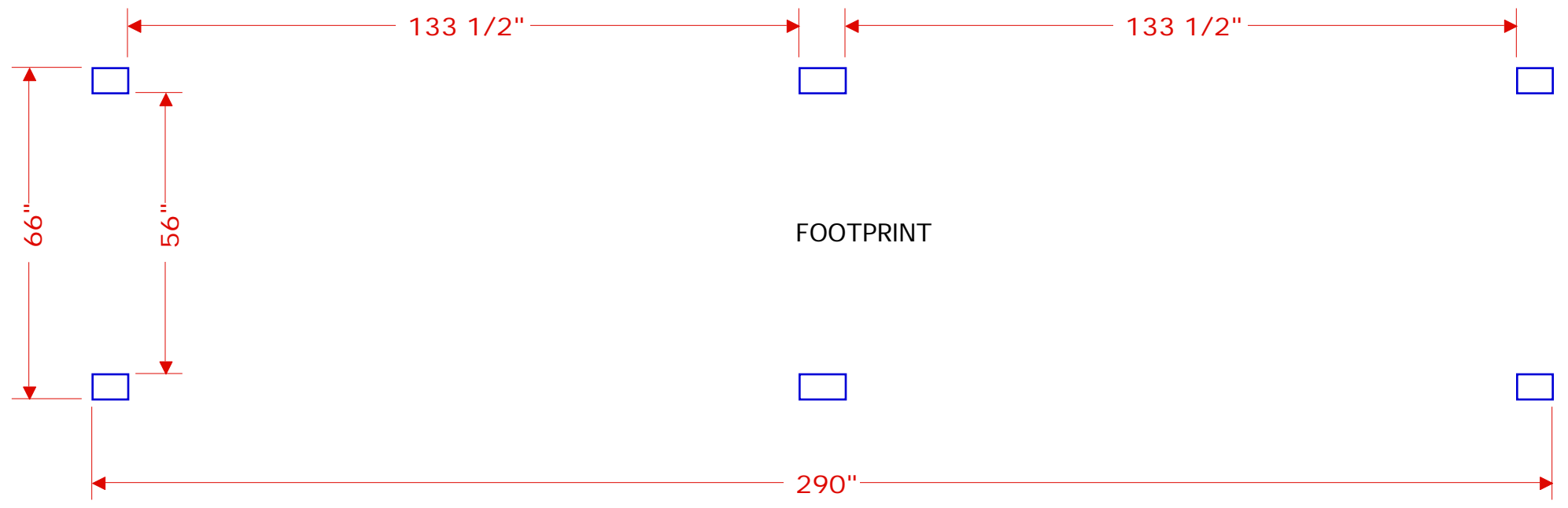
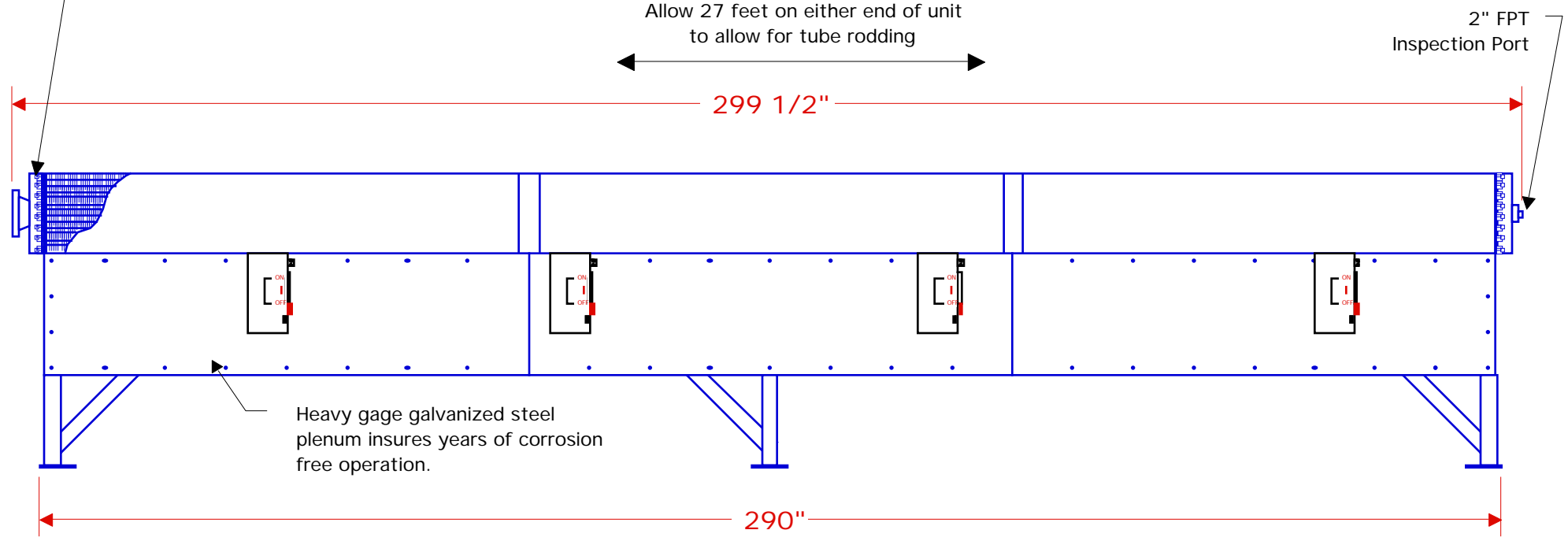
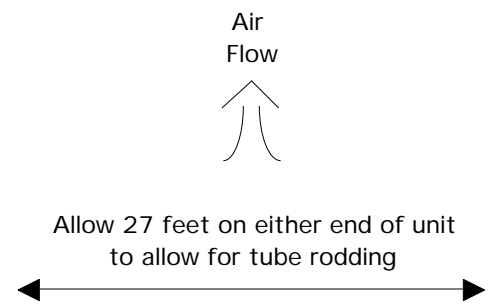
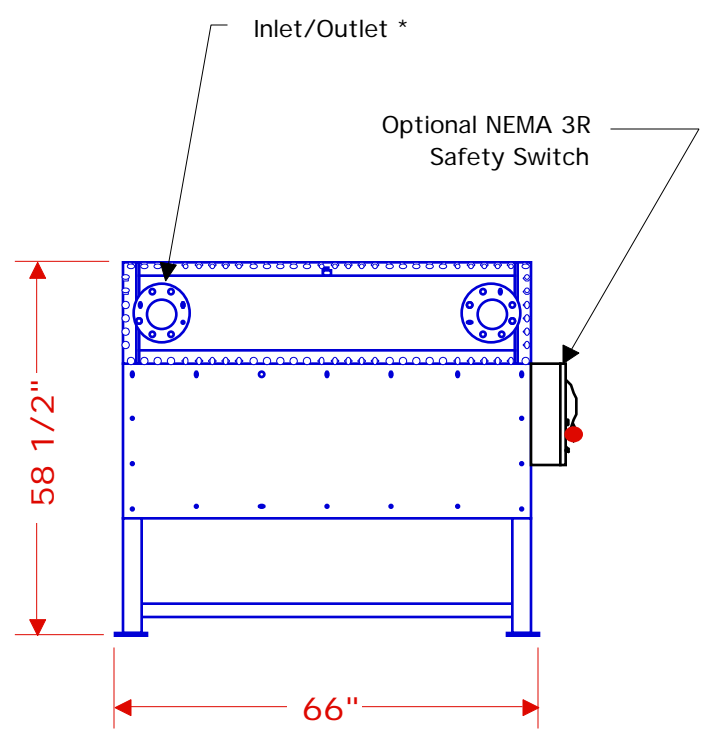


FULL LOAD AMPS	
FAN MOTOR	460 / 3 / 60
5 HP, 1140 RPM	8.8
5 HP, 850 RPM	7.2
3 HP, 860 RPM	6.1



Both ends of the unit are removable to allow easy access to heat exchanger tubes.



\* Either nozzle may be the inlet or outlet  
 Nozzle locations will vary with application. Consult SBS for certified locations.  
 NOTE: All dimensions are +/- 1/2" unless noted  
 Weight: 8307 lbs

	<b>SBS CORPORATION</b> 81 MILL STREET • ROCHESTER, MI 48307 • USA	
	U.S. & Canada 1-800-662-8776 • Fax 1-248-652-4303 • www.sbscorporation.com	
CUSTOMER:		
DRAWN BY: GSB	DATE: 10/23/01	SCALE: 1 : 30
<b>Quench Air Model 5246</b>		