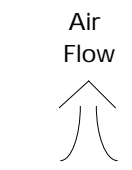
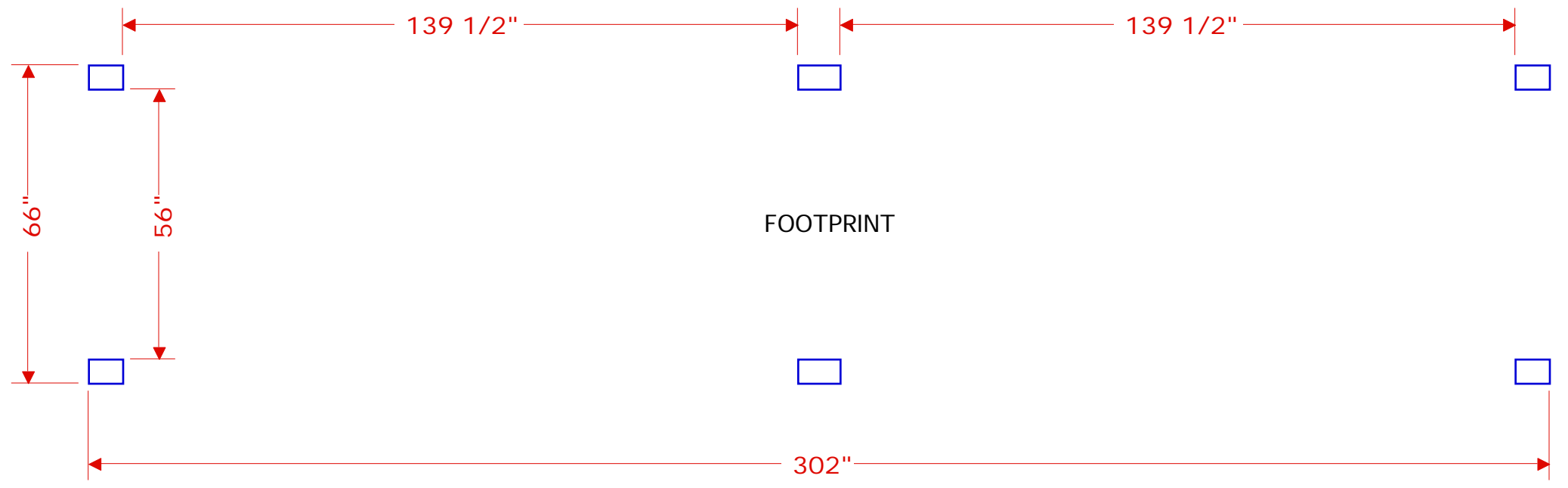
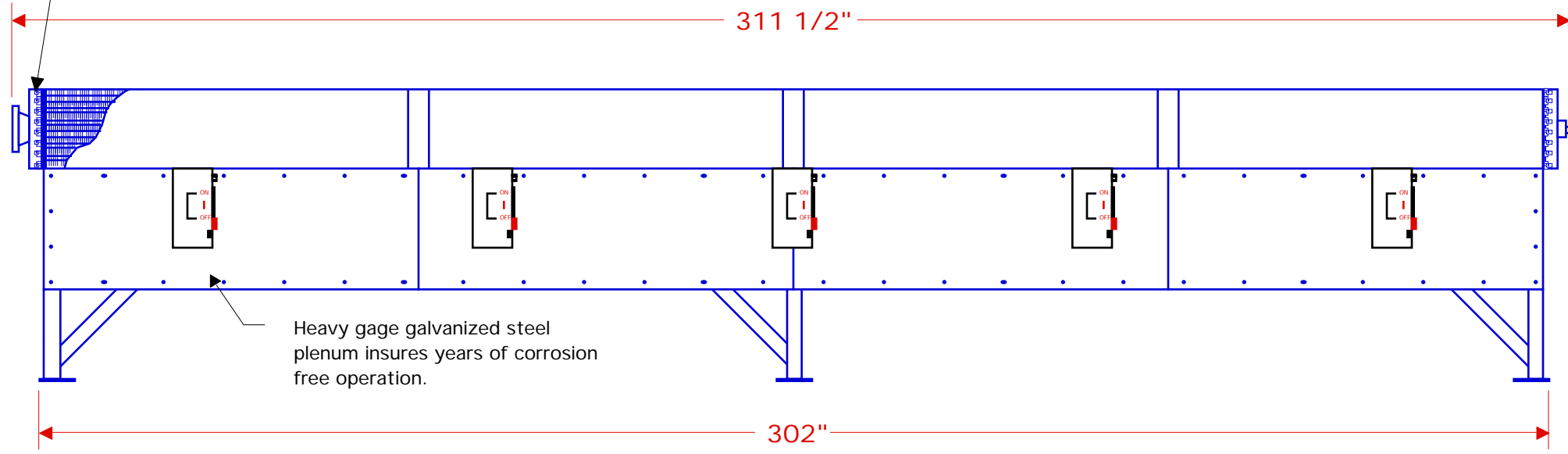


FULL LOAD AMPS	
FAN MOTOR	460 / 3 / 60
5 HP, 1140 RPM	8.8
5 HP, 850 RPM	7.2
3 HP, 860 RPM	6.1



Allow 27 feet on either end of unit to allow for tube rodding

2" FPT Inspection Port

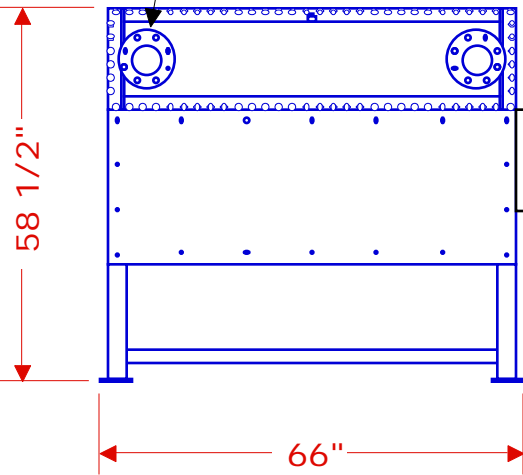


Heavy gage galvanized steel plenum insures years of corrosion free operation.

Both ends of the unit are removable to allow easy access to heat exchanger tubes.

Inlet/Outlet \*

Optional NEMA 3R Safety Switch



\* Either nozzle may be the inlet or outlet  
Nozzle locations will vary with application. Consult SBS for certified locations.

NOTE: All dimensions are +/- 1/2" unless noted

Weight: 8872 lbs

	<b>SBS CORPORATION</b> 81 MILL STREET • ROCHESTER, MI 48307 • USA		
	U.S. & Canada 1-800-662-8776 • Fax 1-248-652-4303 • www.sbscorporation.com		
CUSTOMER:			
DRAWN BY: GSB	DATE: 10/9/01	SCALE: 1 : 30	
<b>Quench Air Model 5256</b>			